

KEY FASTENERS CORPORATION

COMPANY BACKGROUND



Key Fasteners Corporation (est. 1989) is an industry leader in the cold-formed fastener manufacturing sector, with a focus on serving the automotive industry. Our 120,000 sq. ft. facility located in Berne, Indiana produces nuts, bolts, pins, rivets, and engine-critical components. Our fasteners are utilized in a range of vehicles across the globe, playing a crucial role in securing everything from engines to frames, wheel and brake systems, and beyond. Our fasteners have earned the trust of numerous original equipment manufacturers both domestically and internationally.

Contact:

Key Fasteners Corporation
525 Key Way
Berne, IN 46711
Phone: (260) 589-2626

Associates:

~85

Facilities:

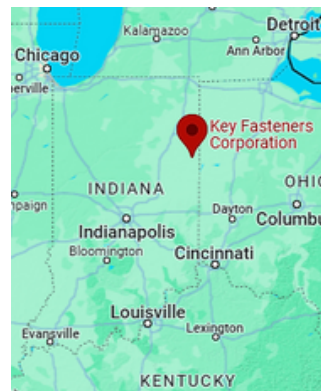
6 acres
120,000 sq. ft. Manufacturing
8,000 sq. ft. Office

Sales:

\$30,000,000+

Parent Company:

Sato RashiCo., Inc. (SRC)
Tokyo, Japan
*Est. 1921



WHAT WE DO



→ BOLT FORMING

→ NUT FORMING

→ HEAT TREATING

→ THREADING

→ TAPPING

→ WELDING

→ CRIMPING

→ MACHINING

→ SHOT BLAST

→ WASHING

→ AUTOMATED INSPECTION

~160

Fasteners in mass
production

100%

On-time delivery in past 5
years

Apx. 2 Billion

Pieces sold in last
5 years

BOLT FASTENERS & SPECS

Flange Bolts



Knurl Bolts



Hex Bolts



Weld Bolts



Min/Max Capabilities:

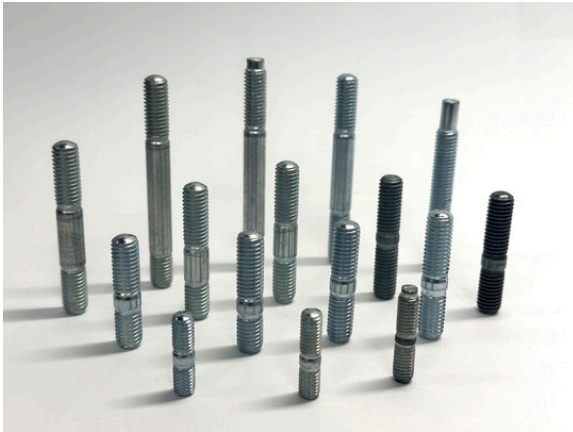
Size: M6 - M12 (1/4" - 1/2")
Max length: 120 mm (4-3/4")
Min length: 18 mm (3/4")
Grade: 8.8, 10.9, 12.9



BOLT FASTENERS & SPECS

(Continued)

Stud Bolts



Size: M6 - M8 (1/4" - 5/16")
Max overall length: 100 mm (4")
Min overall length: 20 mm (3/4")
Grade: 8.8, 10.9, 12.9

Door Hinge Pins



Size: 6 mm - 12 mm (1/4" - 1/2")
Max length: 120 mm (4-3/4")
Min length: 18 mm (3/4")
Grade: 8.8, 10.9, 12.9

Brake Caliper Pins



Max overall length: 100 mm (4")
Max shaft diameter: 12 mm (1/2")
Tapped hole: M8 - M10 (5/16" - 3/8")
Grade: 8.8, 10.9, 12.9

NUT FASTENERS & SPECS

Flange Nuts



Lock Nuts



Min/Max Capabilities:

Size: M5 - M12 (3/16" - 1/2")
Max flange dia: 29 mm (1-1/8")
Max height: 29 mm (1-1/8")
Grade: 8.8, 10.9, 12.9

Hex Nuts



Min/Max Capabilities:

Size: M5 - M14 (3/16" - 9/16")
Max A/F: 19 mm (3/4")
Max height: 20 mm (3/4")
Grade: 8.8, 10.9, 12.9



MISC. FASTENERS & SPECS

Wheel (Lug) Nuts



Size: M12 - M14 (3/8" - 9/16")
Max diameter: 29 mm (1-1/8")
Max height: 29 mm (1-1/8")
Grade: 8.8, 10.9, 12.9

Other Unique Fasteners



Serrated pins, rivets, bushings, collars, and weld nuts. Key also currently manufactures a specialized aluminum oil jet part for use in V6 engines.

EQUIPMENT & MACHINERY



Manufacturing:

Bolt Forming (10 Machines)

- (2) 1 Die 2 Blow (Header)
- (2) 2 Die 3 Blow (Header)
- (1) 2 Die 3 Blow Convertible (Header)
- (3) 4 Die 4 Blow (Bolt Maker)
 - Form, Point, Thread, & Knurl Capability
- (1) 3 Die 3 Blow (Stud Maker)
 - Form & Thread Capability
- (1) 5 Die 5 Blow (Parts Former)

Nut Forming (8 Machines)

- (6) 5 Die 5 Blow (Nut Former)
- (2) 5 Die 5 Blow (Parts Former)

Heat Treating

- (1) Continuous Belt Quench & Temper Line

Threading (4 Machines)

Tapping (20 Machines)

Welding (7 Machines)

- Specific to wheel & cap nut mfg.

Crimping (5 Machines)

- Specific to lock nut mfg.

Machining

- (17) Automatic Lathes

Shot Blast (1 Machine)

Washing (2 Machines)

Automated Inspection (11 Machines)

- (4) Nut Vision
- (4) Bolt Vision
- (1) Stud Vision
- (1) Eddy Current
- (1) Caliper Pin

Quality Lab:

- Rockwell Hardness Tester
- Micro Vickers Hardness Tester
- Tinius Olsen Tensile Tester
- Keyence Image Dimension Measurement System
- Mitutoyo Contracer
- Mitutoyo Surface Roughness Tester
- Buehler Mounting Press & Polisher
- (3) Stereoscope
- (2) Etching Stations

CAPABILITIES SUMMARY



Bolts

Thread Size: M6 to M14
Max Flange Diameter: 25 mm
Length: 18-120 mm

Nuts

Thread Size: M5 to M14
Max Flange Diameter: 28 mm
Max Height: 29 mm

Internal Drive Capabilities:
6 Lobe (Hexalobular), Hex

External Drive Capabilities:
6 Lobe (Hexalobular), Hex, 12 Point

Surface Treatment

All surface treatment is outsourced locally (Midwest US).

Current outsourced plating types include:
Zinc, Geomet, Chrome, & Thread Patch

Material

Key sources all material domestically (US) to eliminate tariff impact and reduce the risk of supply interruptions.

Current grades used in production include:
SAE1010, SAE1025, SAE1045, SAE4135 & SAE10B23

Hardness (HRC):
22-32 for 8.8 grade
32-38 for 10.9 grade
38-44 for 12.9 grade

Heat Treatment Temperatures:
1600 degrees (Hardening furnace)
600-1200 degrees (Draw furnace)

QUALITY COMMITMENT

Company Motto:

Seize the Day

This is our guiding principle. With this philosophy, we strive to consistently surpass customer expectations. Unlike other fastener manufacturers who rely on sampling to ensure product quality, we use advanced robotic camera technology to inspect nearly 100% of our fasteners. This technology enables us to detect even the smallest of imperfections and defects that may not be visible to the human eye. Our team of 80 highly experienced associates, with an average tenure of 14 years, helps us produce over 160 fasteners in mass production.

Certifications:

ISO 9001-2015

ISO 14001-2015

CQI-9



We regularly receive multiple awards from our customers for our commitment to quality and timely delivery, including recent recognition from Honda for Service Part Support in 2024, Excellence in Value in 2021, Excellence in Quality from Honda Power Equipment in 2021, and Quality and Delivery from Aisin in 2024.